

workTM

ideas

THE LATEST
IN BATHROOM
INSPIRATION



robertson

design.ideasTM

ROBERTSONDESIGNIDEAS.CO.NZ

Cover Feature:
SAMUEL HEATH ONE HUNDRED

WINTER
EDITION
2021



THE ONE HUNDRED COLLECTION

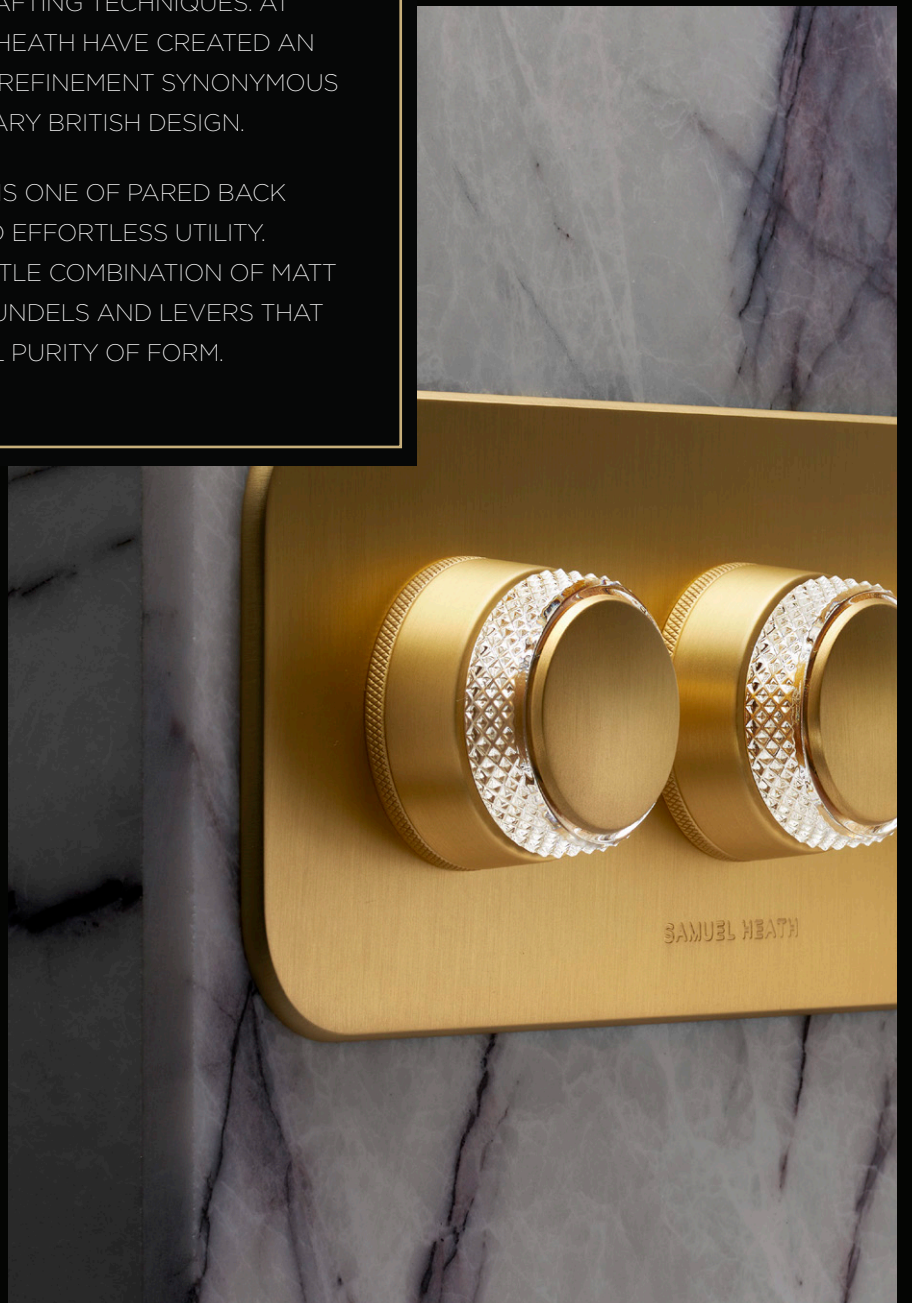




CREATING A SENSE OF OPULENCE

WITH THE ONE HUNDRED COLLECTION SAMUEL HEATH SOUGHT TO EXPRESS THEIR OWN INTERPRETATION OF TIMELESS BRITISH DESIGN. THERE IS AN OPULENCE THAT REVELS IN THE GRANDEUR AND TACTILE DELIGHT THAT COMES FROM COMBINING EXQUISITE MATERIALS WITH TRADITIONAL CRAFTING TECHNIQUES. AT THE SAME TIME SAMUEL HEATH HAVE CREATED AN UNDERSTATED STYLE AND REFINEMENT SYNONYMOUS WITH CONTEMPORARY BRITISH DESIGN.

THE OVERALL EFFECT IS ONE OF PARED BACK SOPHISTICATION AND EFFORTLESS UTILITY. CHARACTERISED BY A SUBTLE COMBINATION OF MATT FINISHES, ALONGSIDE ROUNDELS AND LEVERS THAT EXHIBIT TASTEFUL PURITY OF FORM.



SAMUEL HEATH

PROJECT FEATURE

S&P HOUSE
HAMILTON, NEW ZEALAND

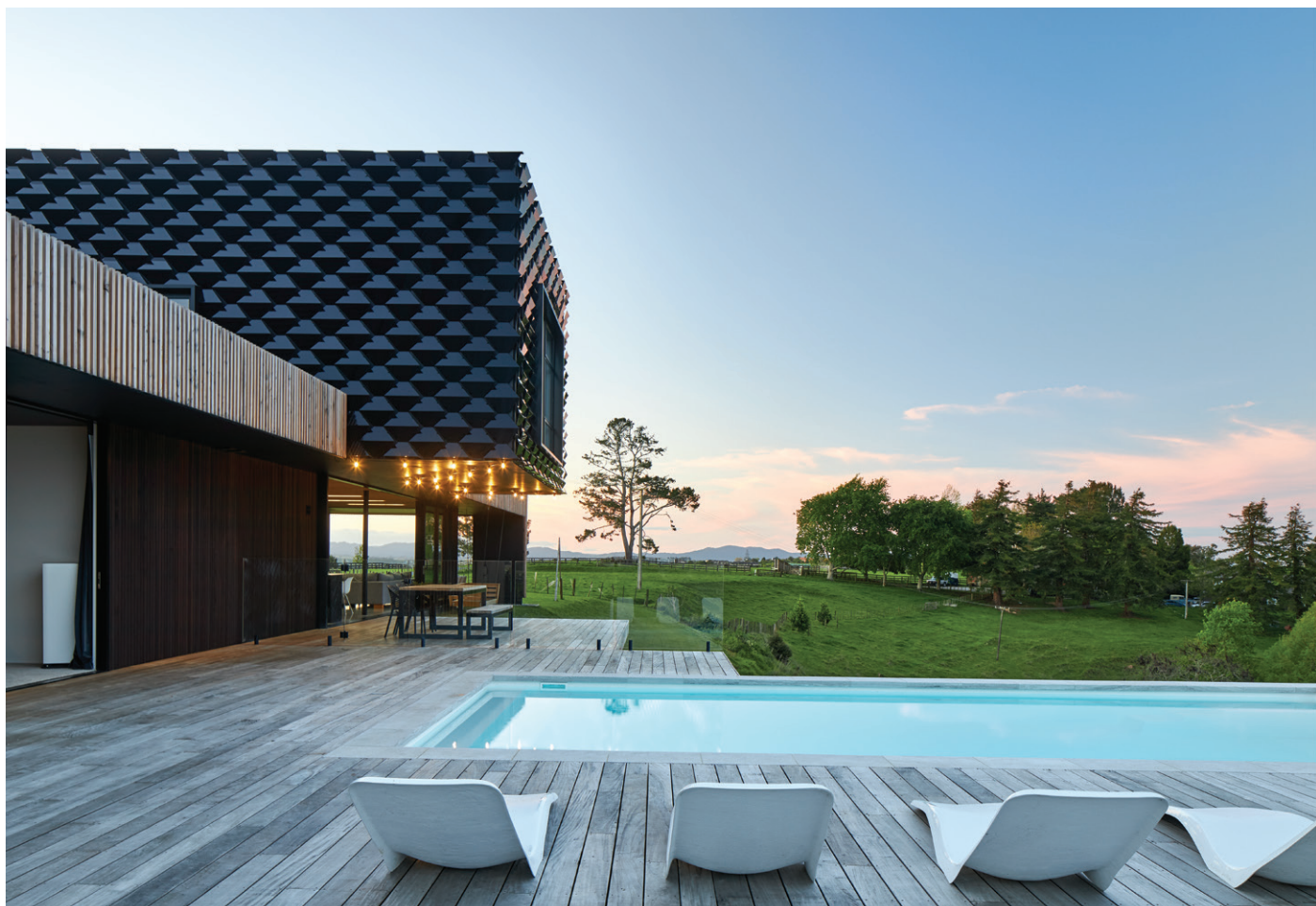
ARCHITECT
NOEL JESSOP ARCHITECTURE

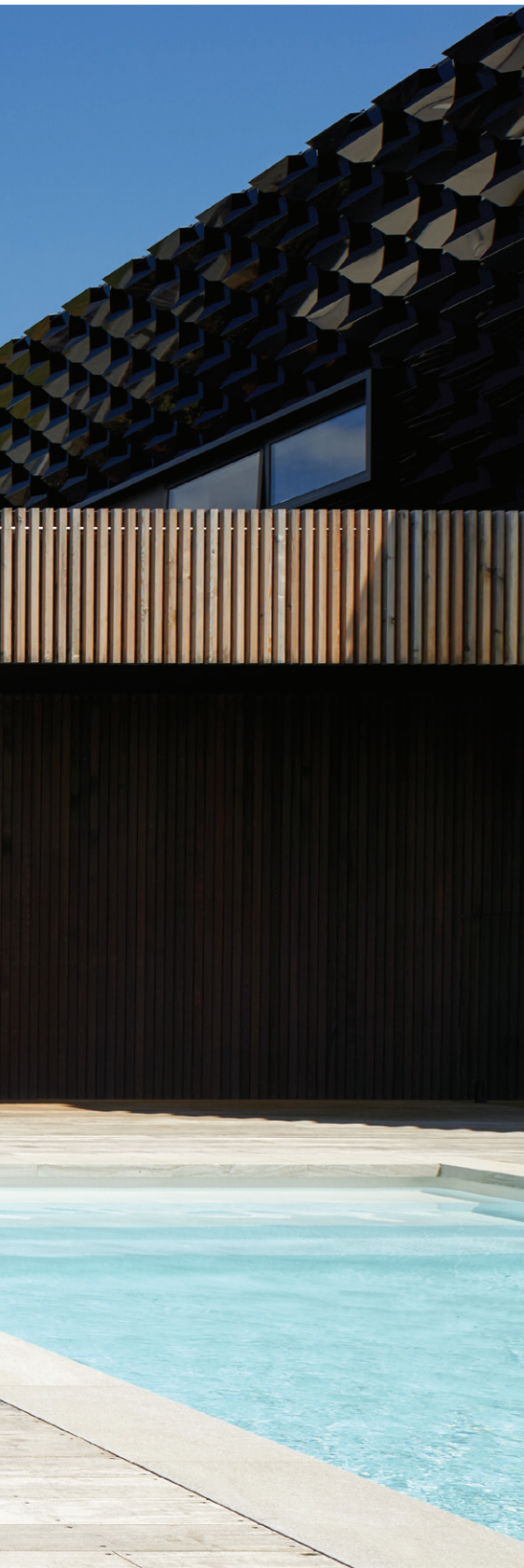
CONSTRUCTION
JOHNSTONE BUILDERS

PHOTOGRAPHER
SIMON WILSON



SEAMLESS CONNECTIONS





Architectural designer Noel Jessop and his wife Kylie bought an elevated section and designed their family home to take advantage of the natural setting and the wide-ranging views.

A seamless connection to nature was a big part of the design of the S&P house, including access from the main ensuite onto the pool deck.

The freestanding bath takes pride of place in the ensuite, while the 'his and hers' showers add an additional sense of luxury.

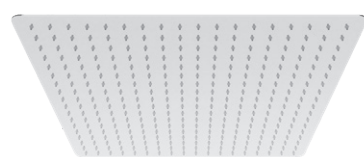
The house is oriented towards the views, comprised of two 'boxes' arranged one on top of the other and set at perpendicular angles.

Metal 'scales' were developed to act as a solar shield for the upper level and to create contrast against the natural look of the larch cladding on the lower level.

FEATURED PRODUCT



ELEMENTI
ION WALL MOUNT BASIN MIXER
GUN METAL:
44256.29



ELEMENTI
VIBRANT 500 ULTRA FLAT SQUARE SHOWERHEAD
POLISHED STAINLESS STEEL:
40251.02



ELEMENTI
SPLASH PLUS SQUARE SLIDE SHOWER
GUN METAL:
40332.29

ELEMENTI
ION BATH COLUMN
GUN METAL:
44285.29

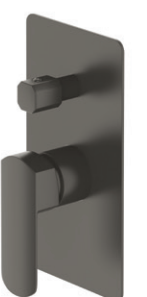


ELEMENTI
ION SHOWER MIXER
GUN METAL:
44270.29

ELEMENTI
BASIN CLICKER WASTE
GUN METAL:
79167.29



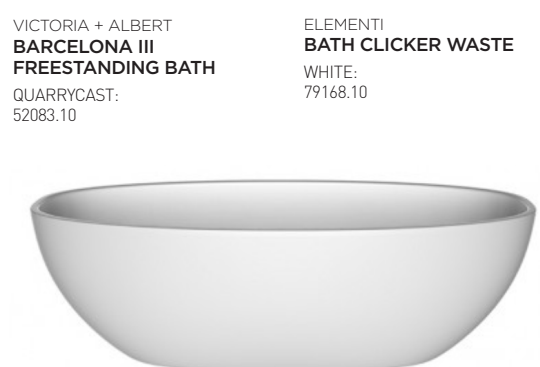
ELEMENTI
ION KITCHEN MIXER
BRUSHED NICKEL:
44203.04



OLI
GLOBE MECHANICAL PUSH PLATE
BLACK SOFT TOUCH:
OL152952



PARISI
LINFA BACK TO WALL TOILET PAN
WHITE:
PN770



VICTORIA + ALBERT
BARCELONA III FREESTANDING BATH
QUARRYCAST:
52083.10

ELEMENTI
BATH CLICKER WASTE
WHITE:
79168.10



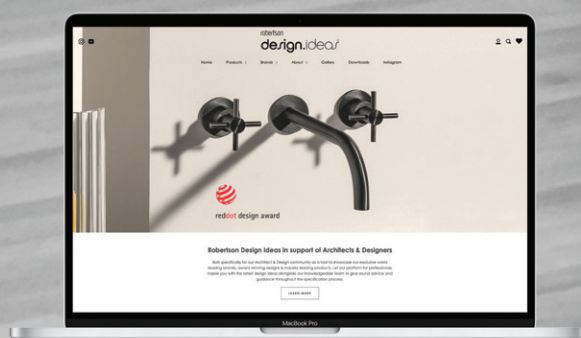
ROBERTSON DESIGN IDEAS .CO.NZ

FIND INSPIRATION IN THE ART OF BATHROOMS.

OUR ROBERTSON DESIGN IDEAS TEAM SEARCH THE WORLD TO FIND THE MOST ARTFUL EXAMPLES OF BATHROOM DESIGN, CONTINUALLY SEEKING NEW INSPIRATION TO SHARE WITH THE ARCHITECTS AND DESIGNERS IN OUR COMMUNITY.

WE'VE CURATED A **NEW ONLINE COLLECTION** FEATURING OUR WORLD LEADING BRANDS, AWARD WINNING DESIGNS AND INDUSTRY LEADING PRODUCTS. ALONGSIDE IT, YOU'LL FIND SOUND ADVICE AND GUIDANCE FOR EVERY STEP OF THE SPECIFICATION PROCESS FROM OUR EXPERT TEAM.

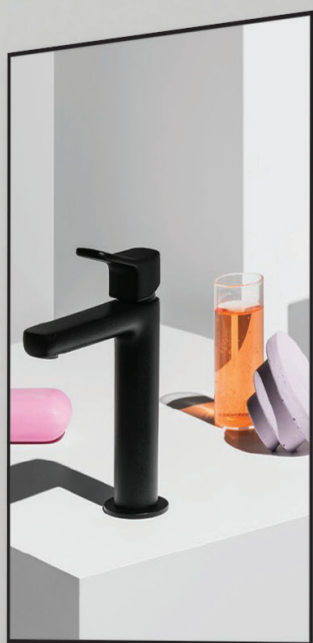
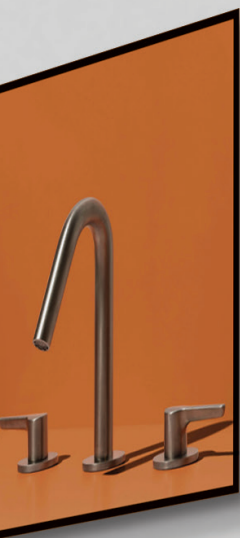
robertson
design.ideas™



NEW WEBSITE
IN SUPPORT OF
DESIGNERS & ARCHITECTS



@ROBERTSONDESIGNIDEAS



INSIGHT

A CONVERSATION WITH DAVID LOPEZ QUINCOCES



“

I START FROM COMPLEX IDEAS TO THEN GET TO A SYNTHESIS AND FIND A STYLE THAT WILL MOST EFFECTIVELY STAND THE TEST OF TIME AND CIRCUMVENT TRENDS”

David Lopez Quincoces

WHAT WAS THE IDEA BEHIND HELM?

You perhaps start out with far more complicated ideas that you then gradually refine and simplify until you find the right identity. The aim is to create an element or language that is as timeless as possible so that the object in question can exist for much longer.

The process behind Helm was actually a little different Zucchetti usually works with brass, so working with steel on this project meant approaching the object from a completely different perspective in terms of construction technique. You know that you will be handling mechanically products parts of the material so we decided to approach it as though it was a set of pieces, a small Lego set to put together. It became a question of the proportions between those elements.

I actually think that approaching the project as an outsider instead of being too immersed in the sector had its advantages, you bring your own aesthetic and its easier to achieve what you want or need.



WHAT WOULD BE THE PERFECT SETTING FOR HELM?

We tried to make it as versatile as possible so that it could be used in diverse situations.

HOW WAS THE WHOLE EXPERIENCE?

My experience of working with Zucchetti was quite different to other companies I work with. There was a huge amount of respect for the initial idea and design. The whole process was a pleasure



AUCKLAND

ROBERTSON

25 Vestey Drive, Mt Wellington
Ph: (09) 573 0490

Open Monday to Friday 8.30am - 5pm
Saturday 9am - 1pm
Closed Sunday

KITCHEN THINGS | LUXURY COLLECTION

26 Morrow Street, Newmarket
Ph: (09) 522 8375

Open 7 days 10am - 6pm



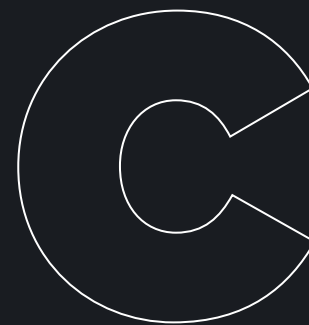
WELLINGTON

ROBERTSON

23 Marion St, Te Aro
Ph: (04) 595 1165

Open Monday to Friday 8.30am - 5pm
Closed Saturday and Sunday

For a bathware consultation please make an appointment by emailing sales@robertson.co.nz



CHRISTCHURCH

HOME IDEAS

37 Mandeville Street Riccarton
Ph: (03) 348 2863

Open Monday to Friday 9am - 5pm
Saturday 10am - 4pm Sunday 11am - 4pm

Request our latest brochures...

Our latest IDEAS brochure is a treasure trove of innovative product and great design, while our GROHE brochure features the finest sanitaryware from the masters of design and technology. Request your FREE copy now!

sales@robertson.co.nz



robertson®
BATHWARE
— SINCE 1987 —

Ph: +64 9 573 0490
Fax: +64 9 573 0495
Email: sales@robertson.co.nz

ROBERTSON.CO.NZ

